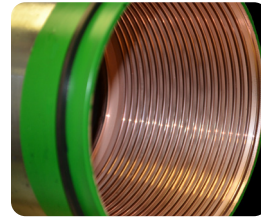




## Oil and Gas Industry

SIFCO Applied Surface Concepts is the global leader in the selective plating industry. More MRO and OEM facilities depend on SIFCO ASC than any other plating specialist for job shop selective plating services. When timing is critical and you want it done right the first time, contact SIFCO ASC at one of our seven locations worldwide.



### THE SIFCO PROCESS®

The SIFCO Process® is a portable method to plate localized areas without the use of an immersion tank.

### PORTABILITY

It can be used virtually anywhere! Use the SIFCO Process® on-site, in your facilities, or at any of our locations worldwide.

### FLEXIBILITY

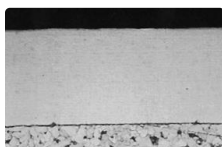
Our process does not require extensive masking and can minimize or eliminate the need for component disassembly.

### SIFCO ASC ENGINEERED DEPOSITS:

Anti-galling • Surface Hardness • Wear Resistance • Corrosion Resistance • Refurbishments



AeroNikl @ 250  
Soft Sulfamate Nickel



AeroNikl @ 575  
Hard Sulfamate Nickel



Nickel-Tungsten 5711

REV 4/18

### TYPICAL APPLICATIONS

- ▶ Drill Bits
- ▶ Tubing Hanger Bodies
- ▶ Inner Mandrels
- ▶ Small Port Repairs
- ▶ Outer Cylinders
- ▶ Casing Hangers
- ▶ Riser Spanner Joints
- ▶ Tension Joints
- ▶ Tubular Connections / Threads
- ▶ Copper Select® Premium Threaded Connections

### US Headquarters

5708 E Schaaf Road  
Independence, Ohio 44131, USA

T +1 800 765 4131

+1 216 524 0099

F +1 216 524 6331

E [info@sifcoasc.com](mailto:info@sifcoasc.com)