



Selective Plating Services

TRUST THE EXPERTS WITH YOUR CRITICAL COMPONENTS

Leveraging the portability of the SIFCO Process®, our Service Technicians bring the process to you. When time is of the essence, if parts are too large to ship or you cannot transfer valuable components, SIFCO ASC will provide the necessary resources to meet your requirements at your location.

Our experienced Service Technicians have undergone rigorous training programs gaining and maintaining their plating certifications so that they fully understand all aspects of the selective plating process and applications.

AT OUR LOCATION

More MRO and OEM facilities depend on SIFCO ASC than any other plating specialist. We have the flexibility to support your needs from our strategically located facilities across the world. Each member of our Technical Support team has extensive industry experience having worked with a broad range of applications.

AT ANY OF OUR JOB SHOPS, WORLDWIDE

SIFCO ASC is a global organization with divisions, authorized distributors and job shops conveniently located close to key industry operational areas. We provide brush plating services at multiple locations worldwide. Please visit our website at www.sifcoasc.com and view our locations around the world to find a SIFCO ASC location near you.

SERVICE ADVANTAGES

- ▶ Portable process for on-site repairs
- ▶ Custom, engineered solutions
- ▶ Quality plating results
- ▶ Increased service life of components
- ▶ Minimal masking and disassembly
- ▶ Numerous industry approvals
- ▶ Superior technical knowledge and expertise
- ▶ Reduced equipment downtime

APPROVALS

- ▶ AMS 2451
- ▶ MIL-STD 865 and 2197 (SH)
- ▶ Facilities meet MIL-I-45208
- ▶ FAA Approved Repair Stations
- ▶ ISO 9001:2015
- ▶ AS9100D Registered Quality Management System



US Headquarters

5708 E Schaaf Road
Independence, Ohio 44131, USA

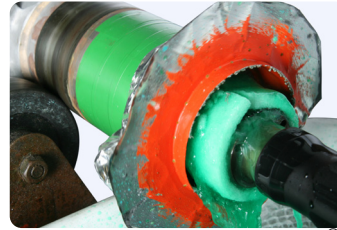
T +1 800 765 4131
+1 216 524 0099
F +1 216 524 6331
E info@sifcoasc.com

Production and Repair Applications

AEROSPACE & AIRCRAFT APPLICATIONS



In-Situ Repair

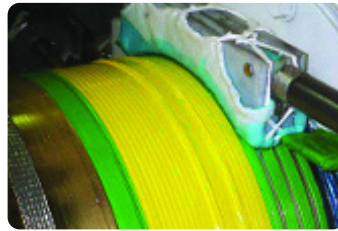


Landing Gear Repair with AeroNikl®

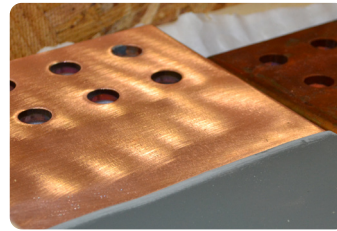


Zinc-Nickel LHE® Touch-Up

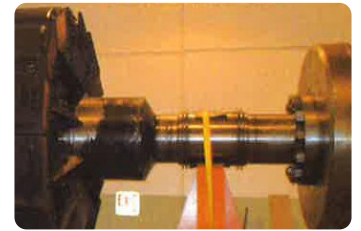
POWER GENERATION & DISTRIBUTION



Windmill Repair

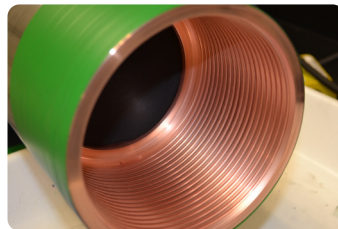


Silver Plating on Bus Bars



Generator Repair

OIL & GAS APPLICATIONS



Copper on Threaded Connection



Shaft Repair with AeroNikl® & Cobalt



AeroNikl®, Nickel-Tungsten & Cobalt on Mandrels

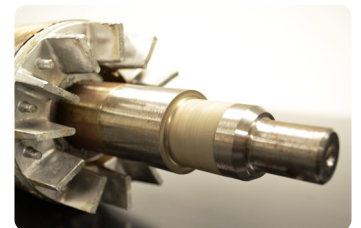
MACHINING & ELECTRIC MOTOR APPLICATIONS



Defect Repair on Blanket Cylinder



Copper & Nickel-Cobalt Plating

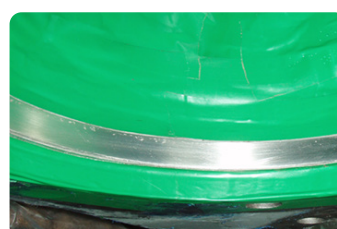


Nickel on Bearing Journal

NAVY, MARINE & MILITARY APPLICATIONS



On-Site Repair



Copper & Nickel on Engine Block



Copper Plating with ID Plater

AEROSPACE & AIRCRAFT APPLICATIONS

Purpose

- ▶ Improve Wear Resistance ▶ Touch-Up Cadmium LHE® & Zinc-Nickel LHE® ▶ Preparation for Brazing ▶ Resize Worn Components
- ▶ Improve High Temperature Performance ▶ Reduce Fretting ▶ Increased Hardness ▶ Increased Lubricity ▶ Repair

Components

- ▶ Shafts ▶ Spacers ▶ Landing Gear ▶ Engine Cases ▶ Vanes ▶ Wing Spars ▶ Nozzle Supports ▶ Turbine Blades & Frames

POWER GENERATION & DISTRIBUTION

Purpose

- ▶ Lower Electrical Contact Resistance ▶ Improve Wear Resistance ▶ Corrosion Protection ▶ Improve Smolderability ▶ Resize Components
- ▶ Improve Surface Hardness ▶ Preparation for Brazing ▶ Anti-Galling ▶ Surface Etching

Components

- ▶ Commutators ▶ Circuit Contacts ▶ Generator Components ▶ Bus Bars ▶ End Bells ▶ Turbine Components

OIL & GAS APPLICATIONS

Purpose

- ▶ Anti-Galling ▶ Corrosion Protection ▶ Wear Resistance ▶ Lower Electrical Contact Resistance ▶ Hardness ▶ Salvage & Repair

Components

- ▶ Roller Cone Drill Bits ▶ Premium Pipe Threads ▶ Tension Joints ▶ Casing Hangers ▶ Tubular Connections ▶ Hydraulic Cylinders
- ▶ Tapered Stress Joints ▶ Fixed Cutter Drill Bits ▶ Ported Slick Joints ▶ Small & Hub Port Repairs ▶ Inner Mandrels ▶ Risers

MACHINING & ELECTRIC MOTOR APPLICATIONS

Purpose

- ▶ Repair Machining Errors ▶ Corrosion Protection ▶ Wear Resistance ▶ Improve Surface Hardness ▶ Dimensional Restoration

Components

- ▶ Gear Box Bores ▶ Bearing Housings & Journals ▶ Casing Hangers ▶ Rotor Journals

NAVY & COMMERCIAL MARINE APPLICATIONS

Purpose

- ▶ Repair Corrosion Damage ▶ Restore Design Size ▶ Resize Worn Areas ▶ Repair Scoring ▶ Correct Machining Errors

Components

- ▶ Hydraulic Cylinders ▶ Reduction Gears ▶ Pumps ▶ Hull Fittings ▶ Steam Valves ▶ Casing Flanges ▶ Bearing Areas on Engines



A QUAKER HOUGHTON COMPANY

OHIO - US Headquarters

5708 E Schaaf Road, Independence, Ohio 44131, USA

T +1 216 524 0099 **F** +1 216 524 6331 **E** info@sifcoasc.com
www.sifcoasc.com

TEXAS

7620 Bluff Point Drive, Houston, Texas 77086, USA

T +1 281 444 6500 **F** +1 281 441 6501 **E** info@sifcoasc.com
www.sifcoasc.com

CONNECTICUT

22 Thompson Road, Dock #4, E. Windsor, Connecticut 06088, USA

T +1 860 623 6006 **F** +1 860 627 0276 **E** info@sifcoasc.com
www.sifcoasc.com

VIRGINIA

1333 Azalea Garden Road, Unit F, Norfolk, Virginia 23502, USA

T +1 757 855 4305 **F** +1 757 855 2438 **E** info@sifcoasc.com
www.sifcoasc.com

ENGLAND - UK Headquarters

Unit 12-14, Aston Fields Trading Estate, Aston Road, Bromsgrove, Worcestershire, B60 3EX England

T +44 (1527) 557740 **F** +44 (1527) 832856 **E** plating@sifco.co.uk
www.sifcoasc.co.uk

FRANCE

16, rue de la Noue Guimante, Lots 22/23, PA de la Courtilière, 77400 Saint-Thibault des Vignes, France

T +33 (1) 60 94 07 87 **F** +33 (1) 60 94 07 89 **E** sifcoasc@sifcoasc.fr
www.sifcoasc.fr

SWEDEN

Furudalsvagen 9, 795 32 Rattvik, Sweden

T +46 248 125 25 **F** +46 248 135 86 **E** info@sifco.se
www.sifcoasc.se